



**Yukabake Instruction**

**ZIPP**  
SPEED WEAPONRY

—riding line—



## Warranty

This product is guaranteed for 2 years against defects in materials and workmanship. Warranty is for original owner and proof of purchase is required for any warranty claim. Product modification of any kind, including but not limited to drilling, filling, grinding, painting or any attempt to remove weight or change intended compatibility or function of this component will immediately void the warranty, so don't do it! If you have any questions about your products please feel free to call us at 1.800.472.3972

ZIPP Speed Weaponry  
1180 N. Main St. Suite A  
Speedway, IN 46224

[www.zipp.com](http://www.zipp.com)

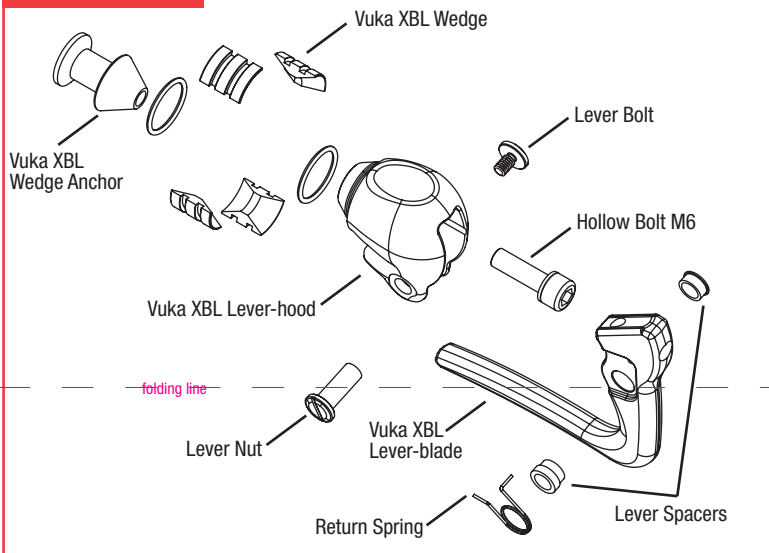
## Caution

All ZIPP Handlebar and Stem components should be installed by a professional bicycle mechanic using the appropriate tools. **ZIPP assumes no responsibility for damages or injury related to improperly installed components.**

### Critical Details

The ZIPP VukaBrake is designed to function optimally with the VukaBull. ZIPP can make no claims as to the fitment or accuracy of non-ZIPP products.

### Product overview



### Installation and Assembly

1. Place steel ferrule onto 5mm brake cable housing.
2. Insert ferrule/brake cable housing through base bar. With some bars it may be easier to route the cable through bar first, and then install ferrule/housing over cable.
3. Insert the ferrule/brake cable housing into the brake lever rear opening.
4. Push the brake lever into bar opening, making sure that the inner diameter of the bar is clean and free of debris, grease or obstruction.
5. Tighten the M6 bolt, using a 5mm hex wrench, to 8Nm (70in.lbs.).
6. Feed new 5mm road style cable through center opening on front of lever. Install and tighten per brake manufacturer's recommendations, ensuring that cable housing and ferrule are resting firmly in the VukaBrake rear opening.

### Maintenance and Inspection

Periodically inspect the VukaBrake for any cracks, chips, scratches and any other visible damage. In the event of an accident do not ride the bicycle until VukaBrake can be inspected by an authorized dealer as the product can be damaged or weakened even if no visible damage is present. If any damage is visible then the VukaBrake should not be used further and replaced.

A list of compatible components and upgrades can be found at [www.zipp.com](http://www.zipp.com)