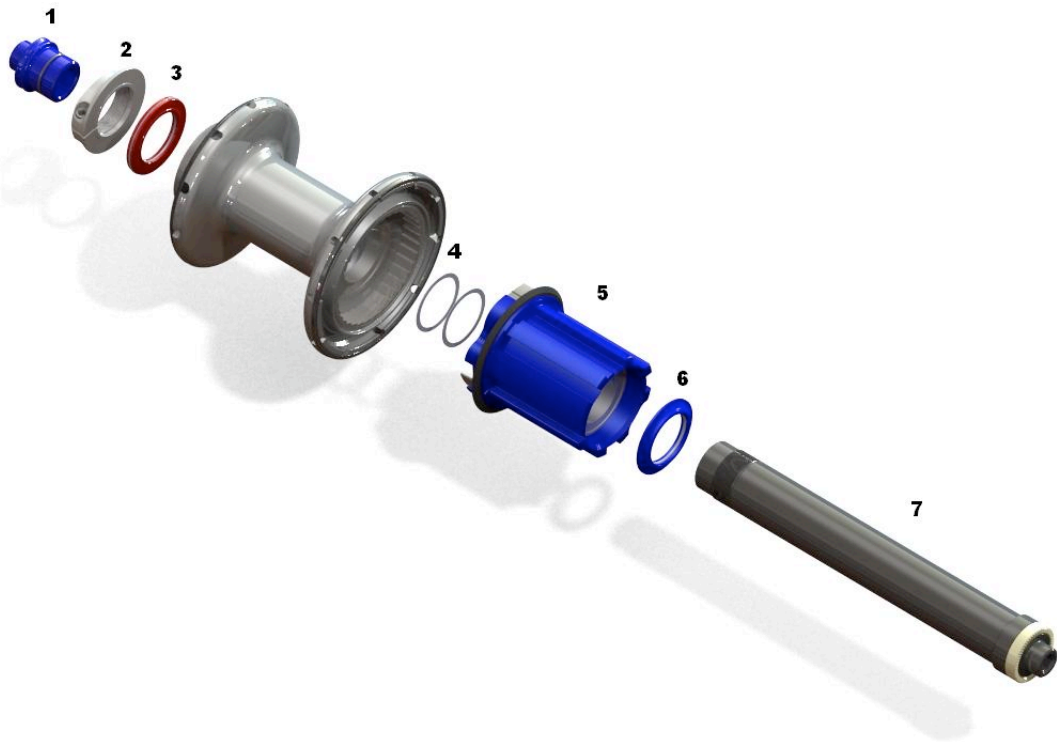


Technical Bulletin

Model Year 2009+ Zipp hub conversion
(Shimano/SRAM to Campy 9/10/11-speed)

Model Year 2009 to present model year Zipp Wheels with 88/188 Shimano/SRAM-compatible hubsets can now be converted Campagnolo 9, 10, and 11 speed drivetrains. To perform this conversion, please contact your Zipp Dealer and ask them to order a “2009 Campy Conversion Kit” (also available on the Zipp Online Store). The kit includes the following:

- Blue non-drive end cap (#1 on diagram)
- Two (2) .25mm shims (#4 on diagram)
- Blue Campy 188 cassette body (#5 on diagram)
- Blue drive side bearing shield (#6 on diagram)



To begin, remove the gray left side end cap from the axle (no tools required). Next, undo the left side cinch nut using a 2mm hex. Completely unthread and remove the cinch nut. You can now pull the axle and freehub body out of the drive side of the hub. Remove the existing .25mm shim (may be stuck to hub bearing or cassette body bearing). Next, slide the Shimano cassette body off of the axle, as well as the red drive side shield. Slide the blue drive side shield (#6) on to the axle with raised lip *facing the bearing*, followed by the Blue campy cassette body (#5). Now install the two .25mm shims (#4) onto the axle. Insert the assembly into the drive side of the hub, pushing the pawls down with your fingers. Install the previously-used red non-drive seal with raised lip *facing the bearing*. Thread cinch nut onto axle until it stops. Back it off 1/8th turn and tighten down the 2mm hex bolt. Insert the blue non-drive end cap (#1).

As always if you have any question please feel free to call our technical specialists at Zipp at 1-800-472-3972.